

Soil-Net.com Design Concepts Version 1.0



Contents

Logo Sketches	page 2
Logo Development	page 3 & 4
Character Sketches	page 5 & 6
Character Rendering	page 7 & 8
KS 1 & 2 layout designs	page 9



fig. 1



fig. 2



fig. 3



fig. 4



fig. 5



fig. 6



fig. 7



fig. 8

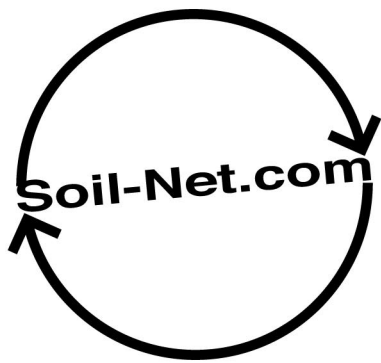


fig. 1



fig. 2



fig. 3



fig. 4



fig. 5

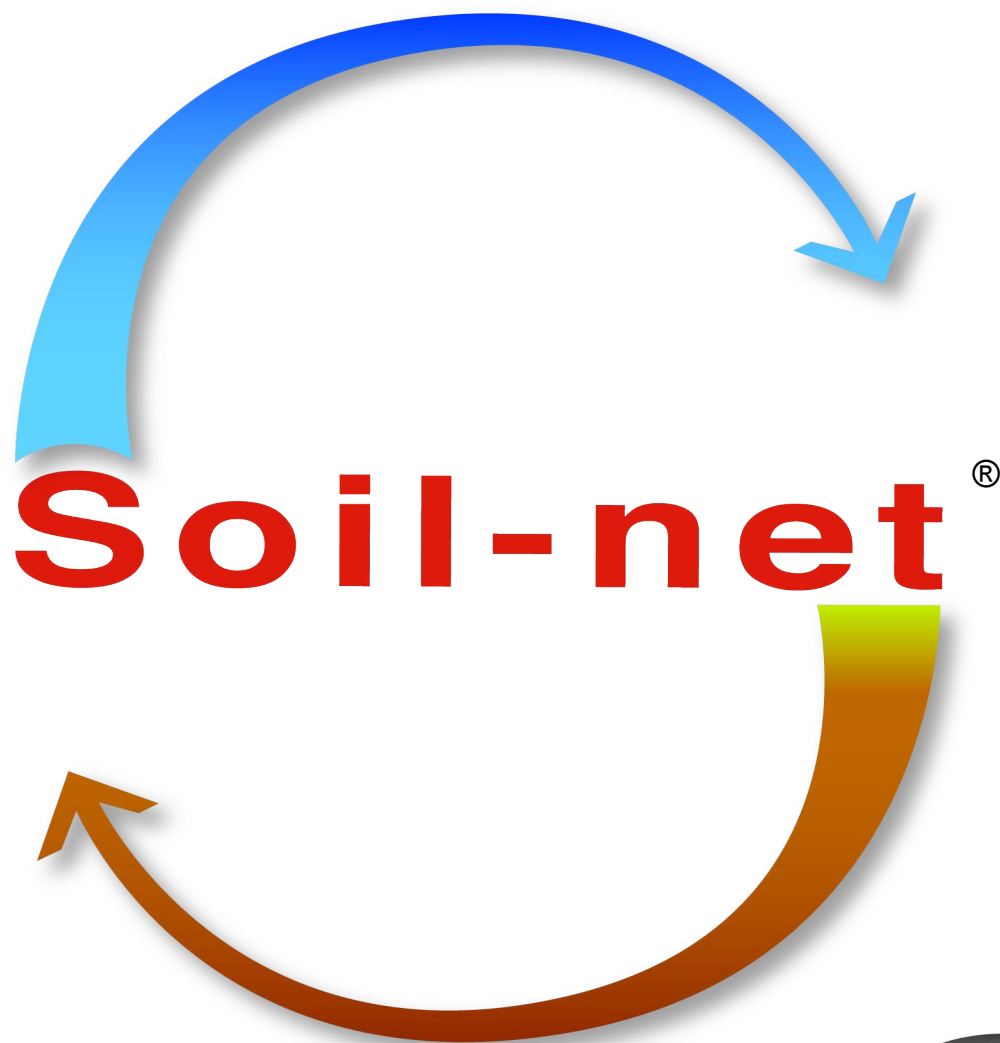


fig 1.
Full colour logo. Designed to express
the cycle and the focusing detail on Soil
Layers. Could also work with photo-
graphic images.



fig 2.
Shaded Silhouette for hardcopy printing.



fig 3.
Would work as smaller icon, either on
web page, as a 'favicon' next to web
address.



fig. 1

fig. 2



fig. 3



fig. 4

Sketches

A series of rough sketches depicting various poses/characteristics.

fig 1.
Mole. Could be a useful character to
help advise with accessibility issues.



fig 2.
'Gonzales' the snail. Always in a hurry.

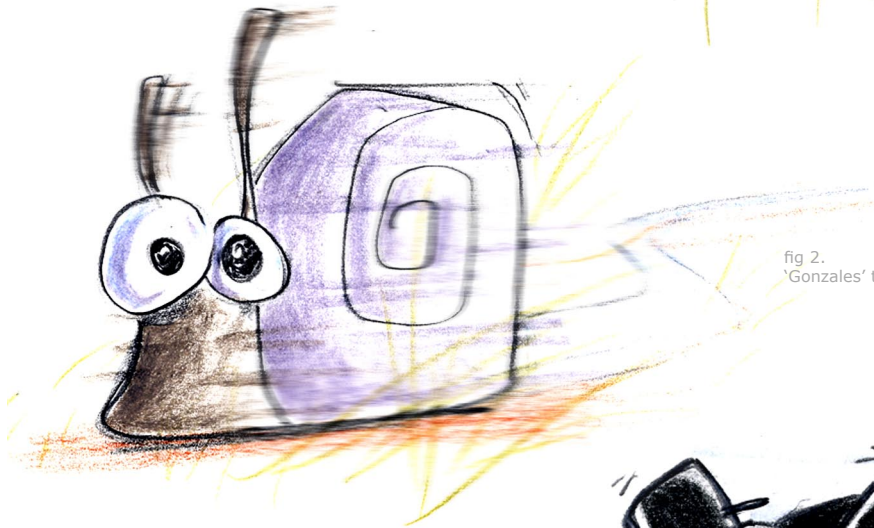


fig 3.
Grumpy old Badger. Could play the par-
ent/ teacher figure.



Multitple Character Sketches

The advantage of having a cast or family of characters is the ability to have multiple view points and personalities for students to relate to.

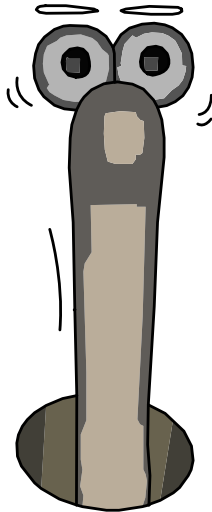


fig. 1

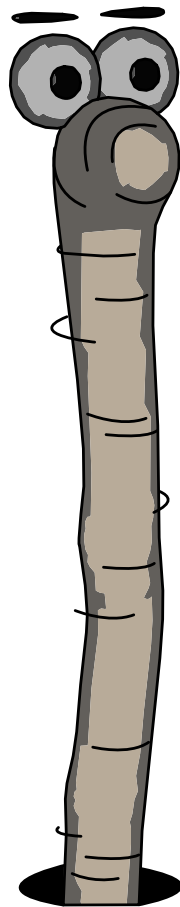


fig. 2

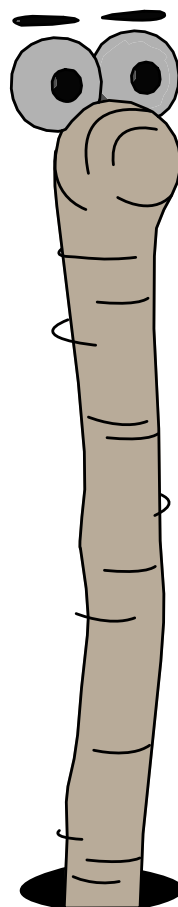


fig. 3

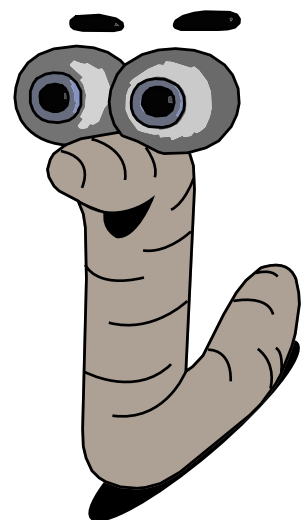


fig. 4

3D Vector/Flash

This is a 3D Character that has been rendered as a Flash Vector File. The advantage to this process is being able to create stock characters (no hand drawing) to create low file size characters.



fig. 1
'Wiggles' the worm.

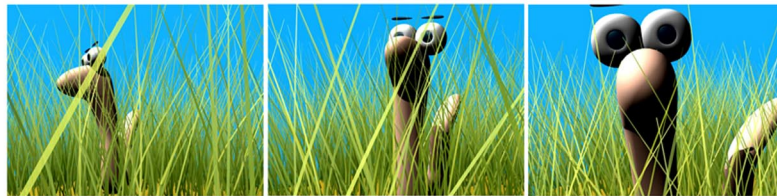


fig. 2
Stills from test animation.



fig. 3
Hedgehogs illustration commission

3D Textured

fig.1 & 2 are examples of worm model
renderd using Alias Maya.

fig. 3 gives an example of the finished look if
this we were to use this approach.

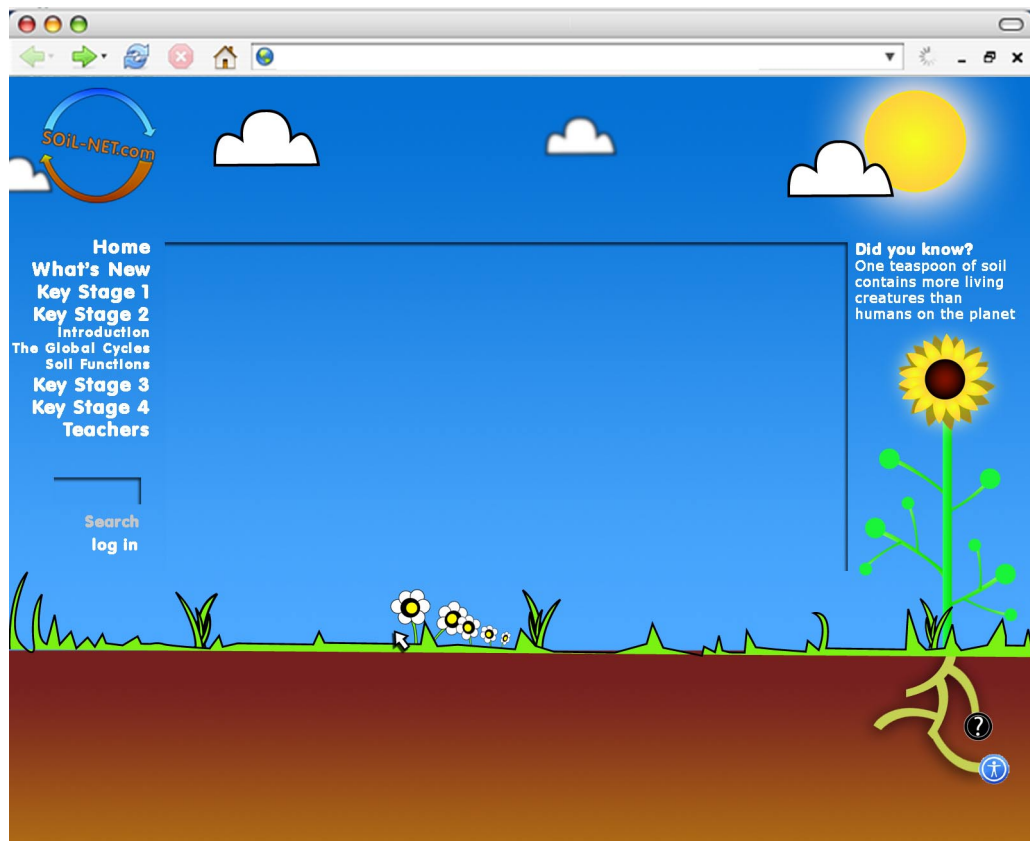


fig 1.
Flat Vector Style Layout.

Flash Header.

Continuous floating clouds with varying rollover actions.
Background could change darker at night time for added texture.

Logo

Animated Logo activated upon 'mouse over'.

Did you know?

Random fact linked to relating lesson/movie.

Character Spot

Helpful characters appear to help guide students through various lessons.

Navigation Tree

Extra Navigation.
Can be any plant.

Parent/Teacher Links

Linking to relevant pages from the 'root' area of the Navigation Tree including accessibility.

Stage

All movies and written content to be placed inside stage.

Grass Level

Rollover actions include sprouting daises.